

# Adapter Ring for 12" L-868B Base Can to 8" Inset Fixture

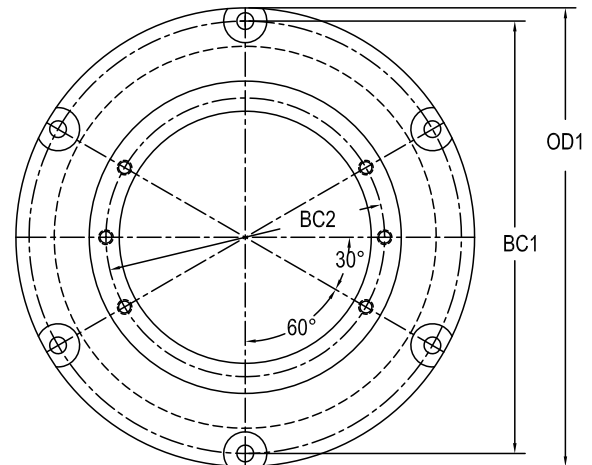
## Compliance and Applications

Certified to FAA AC 150/5345-42 (Current Revision), Size: B=12"

Adapter ring for mounting 8" diameter (7.25" BC) inset fixture to 12" L-868B base can.

## Specifications

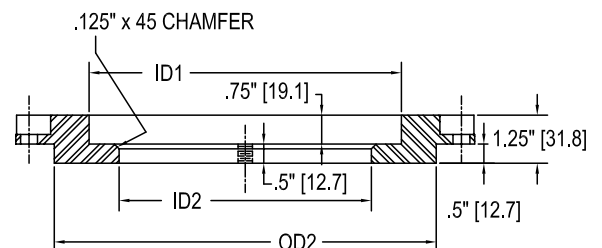
- Steel construction with hot dip galvanized finish
- Galvanized to ASTM-A123/A123M-02
- (6) 7/16" Ø equally spaced, thru holes with 1-1/8" Ø x 1/2" deep counter bore
- (6) 3/8"-16 tapped holes
- Adapter rings are shipped with:
  - (2) 3/8"-16 x 1-1/4" stainless hex head cap screws
  - (2) 3/8", 2 piece locking washers
  - (1) Bolt Set containing:
    - + (6) 3/8"-16 x 1" stainless hex head cap screws
    - + (6) 3/8", 2 piece locking washers



## Ordering Codes

Part #	OD1	BC1	OD2	ID1	BC2	ID2
<b>BA-AA122820</b>	11.938"	11.25"	9.938"	8.125"	7.25"	6.563"
12" L-868B	(303.2)	(285.8)	(252.4)	(206.4)	(184.2)	(166.7)

(length in mm)



+1.800.806.3548 USA  
+1.916.394.2800 Worldwide  
+1.916.394.2809 Fax

[www.flightlight.com](http://www.flightlight.com)  
[sales@flightlight.com](mailto:sales@flightlight.com)

Flight Light Inc., 2708 47th Ave.  
Sacramento, CA, 95822, USA