

FTS 371 & FTS 371 SMART Vanguard®

Medium Intensity Red LED Aviation Obstruction Lighting Systems



Compliance and Applications

The FTS 371 series is a low-power FAA L-810/L-864 red obstruction lighting system for FAA type A1 structures that meets FAA regulations for flashing markers.

With LED replacing incandescent lighting and marker power consumption decreasing by as much as 98%, a new approach for accurate monitoring is required. The FTS 371 uses a patent-pending current feedback monitoring technology that will not fluctuate with changes in incoming power and temperature, providing consistent and predictable results.

The FTS 371 and FTS 371 SMART meet FAA AC 150/5345-43H and can accommodate both AC 70/7460-1K and 1L marker requirements. The system also meets Transport Canada CAR 621.19, ICAO Type B and Type C (6th Edition) and DGAC Mexico.

FTS 371 Standard Features

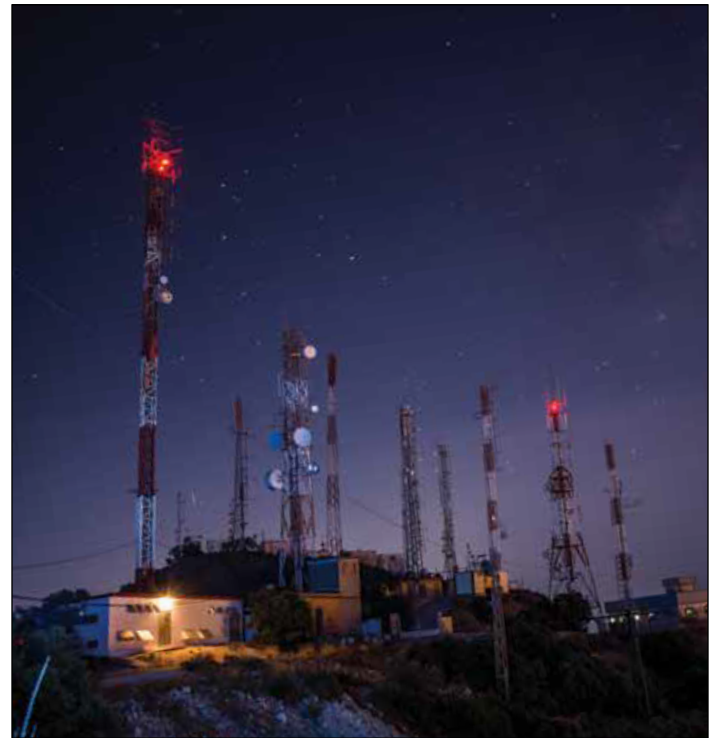
- Flash rate of 20, 30, 40 or 60 flashes per minute (200 ms flash duration).
- Infrared beacon LEDs for night vision compatibility.
- Mode override switch.
- Photodiode control with alarm inhibit option.
- (1) dry contact relay (master alarm).
- Support for up to 4 markers and 1 beacon.
- 5 year warranty.

FTS 371 System Options

- Infrared marker LEDs.

FTS 371 SMART Standard Features

- Modbus RTU Serial RS-485.
- (4) dry contact relays (PHD, BCN and MKR alarms, MODE status relay).
- Support for up to 8 markers and 2 beacons for AC; 1 beacon for DC.
- Sync input/output interconnects multiple beacons for sync without GPS.



FTS 371 SMART System Options

- Negative 24-48VDC \pm 10% (Isolated DC Power Supply).
- GPS Synchronization.
- Powder Coated Aluminum Enclosure.
- SNMP Monitoring through FTM 190.
- Infrared Marker LEDs.




+1.800.806.3548 US & Canada
 +1.916.394.2800 Worldwide
 +1.916.394.2809 Fax

www.flightlight.com
sales@flightlight.com

Flight Light Inc., 2708 47th Ave.
 Sacramento, CA, 95822, USA



FTS 371 General Specifications

Input Voltage	85-265 VAC at 50/60 Hz 12-48 VDC ±10% (12 VDC for markers only)
FH Aerodynamic Wind Area	99.125 in ² (63,951.485 mm ²)
Protection Rating	IP65, NEMA 4X
Certifications	  

Component	Dimensions	Weight
Polycarbonate Controller	6" x 6" x 3" (152.4 x 152.4 x 76.2 mm)	AC/DC 2.1 lb. (0.95 kg)
Flash Head	15.75" dia. x 7.5" (400.05 dia. x 190.5 mm)	AC/DC 25.6 lb. (11.61 kg)
Marker (Single L-810)	9" x 2.75" x 2.13" (228.6 x 69.9 x 54.1 mm)	DC 1.6 lb. (0.73 kg)
OL2 (Double L-810)	11" x 5" x 8.75" (279.4 x 127 x 222.25 mm)	DC 5.4 lb. (2.45 kg)

	Power Consumption (Watts)			
		20 fpm	30 fpm	Steady
FTC 371	AC	0.9	0.9	0.9
	DC	0.8	0.8	0.8
FH 371	AC	4.0	5.3	30
	DC	4.0	5.3	30
Marker 371 (Single L-810)	DC	-	0.5	2.5
OL2 (Double L-810)	DC	-	1.0	5.0

FTS 371 Ordering Codes

38-FT371: LED L-864 Beacon only

38-MKR370: AC LED Marker Light only

38-MKR371: DC LED Marker Light only




38-FTS371: L-864 LED System includes:

- (1) L-864 LED Beacon
- (1) AC Controller

38-FTS371-A1: A1 Tower System includes:

- (1) L-864 LED Beacon
- (1) FLC371 Controller with PEC510 photocell and 20' pigtail
- (1) Dry contact monitoring data point
- (3) MKR 371 Side Lights
- (1) 350' cable spool for flash head
- (1) 200' cable spool for side markers

FTS 371 SMART General Specifications

Input Voltage	85-265 VAC at 50/60 Hz 12-48 VDC ±10% (12 VDC for markers only)
FH Aerodynamic Wind Area	99.125 in ² (63,951.485 mm ²)
Protection Rating	IP65, NEMA 4X
Certifications	  

Component	Dimensions	Weight
Polycarbonate Controller	10" x 8" x 6" (254 x 203.2 x 152.4 mm)	AC 5.6 lb. (2.54 kg)
		DC 4.9 lb. (2.22 kg)
Aluminum Controller	16.1" x 10.5" x 4.9" (408.9 x 266.7 x 124.5 mm)	AC 9.5 lb. (4.3 kg)
		DC 8.8 lb. (4 kg)
		(-) 24 VDC 10.7 lb. (4.9 kg)
		(-) 48 VDC 10.7 lb. (4.9 kg)
Flash Head	15.75" dia. x 7.5" (400.05 dia. x 190.5 mm)	AC/DC 25.85 lb. (11.7 kg)
Marker (Single L-810)	9" x 2.75" x 2.13" (228.6 x 69.9 x 54.1 mm)	DC 1.6 lb. (0.73 kg)
OL2 (Double L-810)	11" x 5" x 8.75" (279.4 x 127 x 222.25 mm)	DC 5.4 lb. (2.45 kg)

	Power Consumption (Watts)			
		20 fpm	30 fpm	Steady
FTC 371	AC	3.8	3.8	3.8
	DC	1.3	1.3	1.3
FH 371	AC	4.0	5.3	30
	DC	4.0	5.3	30
Marker 371 (Single L-810)	DC	-	0.5	2.5
OL2 (Double L-810)	DC	-	1.0	5.0

FTS 371 SMART Ordering Codes

38-FTS371S-A1: A1 Tower Smart System includes:

- (1) L-864 LED Beacon
- (1) FLC371 Smart Controller with PHD512 photocell and 20' pigtail
- (4) Dry contact monitoring data points
- (3) MKR 371 Side Lights
- (1) 350' cable spool for flash head
- (1) 200' cable spool for side markers

FTS 361x-4

Medium Intensity Red LED Aviation Obstruction Lighting System

Compliance and Applications

The FTS 361x-4 series is an LED L-864 system for structures taller than 150' AGL (FAA tower types A2-A6).

All FTS 361x series systems include a display menu for onsite:

- Alarm notification
- Diagnostics
- Configuration
- Lighting inspections

FTS 361x-4 Standard Features

- 5 year warranty, 10+ year life expectancy.
- Automatic fail-safe - switches to night mode after 19 hours of no mode change; can be disabled if necessary.
- Fresnel optics to minimize ground scatter.
- No EMI or RF.
- 24/7/365 monitoring and call center services available.
- Configurable to meet AC 70/7460-1L.

FTS 361x-4 System Includes

- (3) L-864 LED Beacons
- FLC3612 Red Light Controller
- PEC 510 Photocell with 20' pigtail
- (7) Dry contact monitoring data points
- (6) RTO LED Side Markers
- (1) 550' & (2) 300' spools of flash head cable & 500' marker cable



FTS 361x-4 System Options

- Eagle or Modbus Serial Connection - Provides advanced data monitoring (when monitored the system qualifies for annual inspections rather than quarterly).

Ordering Code

FTS 361x-4: 38-FTS3613-4-A2

FTS 361x-4 General Specifications

Input Voltage	100-240 VAC
Frequency	50-60 Hz
Marker Power Consumption	6.8 Watts each
Marker Dimensions	5.25" x 5.3" (133.35 x 134.62 mm)
Marker Weight	1.8 lb. (.82 kg)
FH Dimensions	15.75" dia. x 7.31" (400.1 dia. x 185.67 mm)
FH Weight	26.3 lb. (11.93 kg)
FH Aerodynamic Wind Area	99.125 in ² (63,951.485 mm ²)
FH Power Consumption	14 Watts (50% duty cycle, 20 FPM) 23 Watts IR (50% duty cycle, 20 FPM)
Flash Intensity	Night (red) 2,000 ±25% ECD
Controller Dimensions	21.75" x 16.75" x 6.44" (552.45 x 425.45 x 163.58 mm)
Controller Weight	22 lb. (9.98 kg)
Controller Power Consumption	12 Watts
Protection Rating	IP65, NEMA 4X

Certifications



+1.800.806.3548 US & Canada
 +1.916.394.2800 Worldwide
 +1.916.394.2809 Fax

www.flightlight.com
sales@flightlight.com

Flight Light Inc., 2708 47th Ave.
 Sacramento, CA, 95822, USA