



Flight Light Inc.
2708 47th Ave.
Sacramento, California, U.S.A.
95822-3806

PH (916) 394-2800 FX (916) 394-2809
TF (800) 806-3548 EM info@flightlight.com

Flight Light/atg airports (formerly ALSTOM)
ZA489 Series High Intensity
Inset Lights For Stop Bar and
Guard Light Applications:
FAA Compliant: L852S and L852G

Compliance and Applications

FAA Compliant: L-852S and L-852G
(AC 150/ 5345-46B, AC 150/5340-28,
AC 120-57A)

Stop bar lights and guard lights provide traffic control on taxiways intersecting an active runway and are required for all SMGCS operations under low visibility conditions.

System Features with SmartSwitch and Transformer Switch Units

All of the power connectors on the TSU and SmartSwitch are L-823 plugs and sockets. The control cables are supplied either with bare ends, allowing crimped connections and heat shrink to be used, or with L-823 connectors, allowing extension cables to be used. This is specified at the time of ordering.

Why Our ZA489-8 is Better

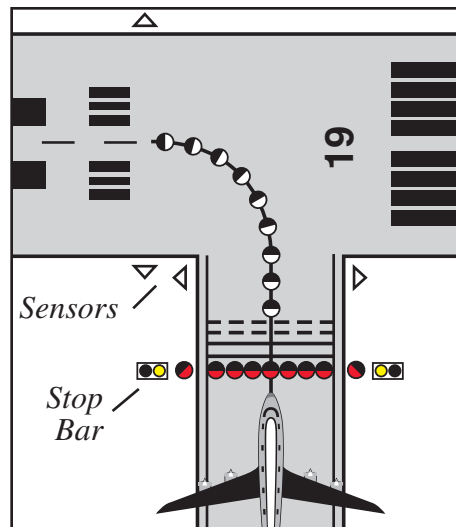
- ✓ The L-852S stop bar light is traffic signal red, and the L-852G guard light is traffic signal yellow, in accordance with ITE Standard for Vehicle Traffic Control Signal Heads.
- ✓ 8" sealed optical cartridge fits 12" adapter ring and is held with two stainless steel bolts for ease of maintenance.
- ✓ Lightweight and robust aluminum alloy construction.
- ✓ Prisms require no sealant.
- ✓ Pre-focused optics simplify maintenance.
- ✓ Pressure test plug ensures moisture-proof light cavity.
- ✓ Low profile: 0.47" (12mm) above grade.
- ✓ Long life halogen lamps: 3500 hours in normal use.
- ✓ L-852S and L-852G use interchangeable parts.

Specifications (ZA489-8)

- 6.6A from 100W, or 200W isolating transformer. Uses 1@105W lamp.
- Powder coat finish in golden yellow or NATO green. Stainless steel fasteners.
- Fixture net weight 31 lb. (14kg). Gross weight 33 lb. (15kg). Carton size 12.7 in. x 12.7 in. x 5 in. (323mm x 323mm x 127mm).

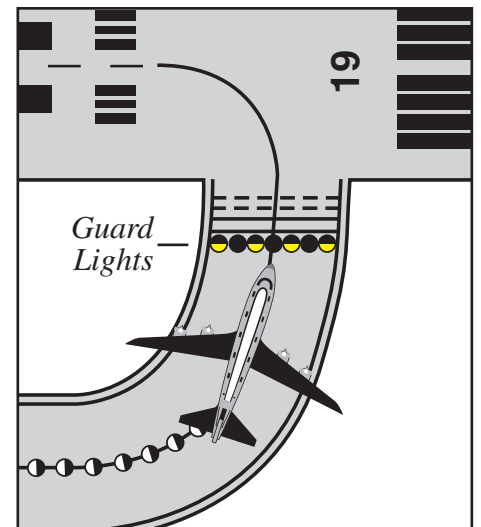


ZA489-8 Series unidirectional high intensity inset light.



Stop Bar Configuration

A stop bar consists of a row of L-852S unidirectional in-pavement red lights that prohibits access to an active runway or taxiway. An elevated red light, L-862S, is set on each side of the taxiway at runway intersections. Stop bars are for low visibility operations.



Guard Light Configuration

Runway guard lights, L-852G, are alternating yellow in-pavement lights that may be individually controlled and monitored to provide for all-weather operation protection against runway incursions.

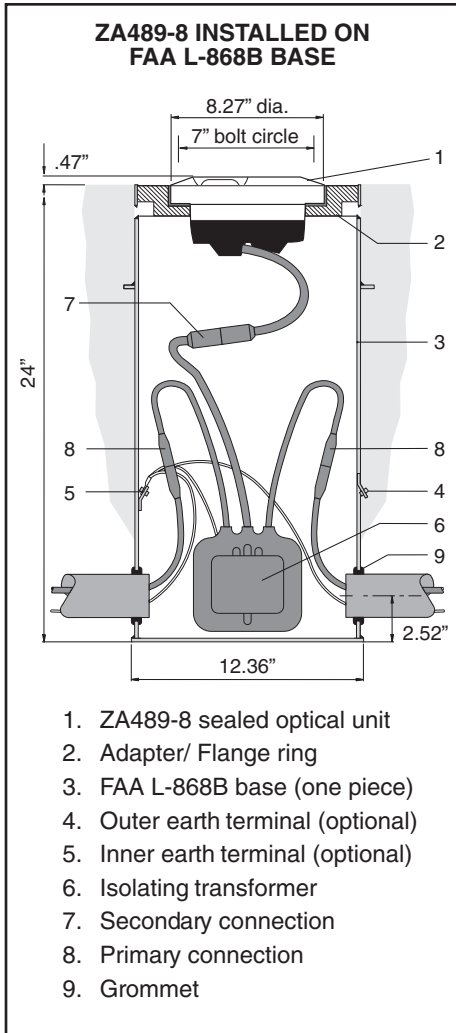
Visit our web site: www.flightlight.com



Flight Light Inc.
2708 47th Ave.
Sacramento, California, U.S.A.
95822-3806

Flight Light/atg airports (formerly ALSTOM)
**ZA489 Series High Intensity
Inset Lights For Stop Bar and
Guard Light Applications:
FAA Compliant: L852S and L852G**

PH (916) 394-2800 FX (916) 394-2809
TF (800) 806-3548 EM info@flightlight.com



**Part Numbers for
Mounting on L868B Base:**

L852G:

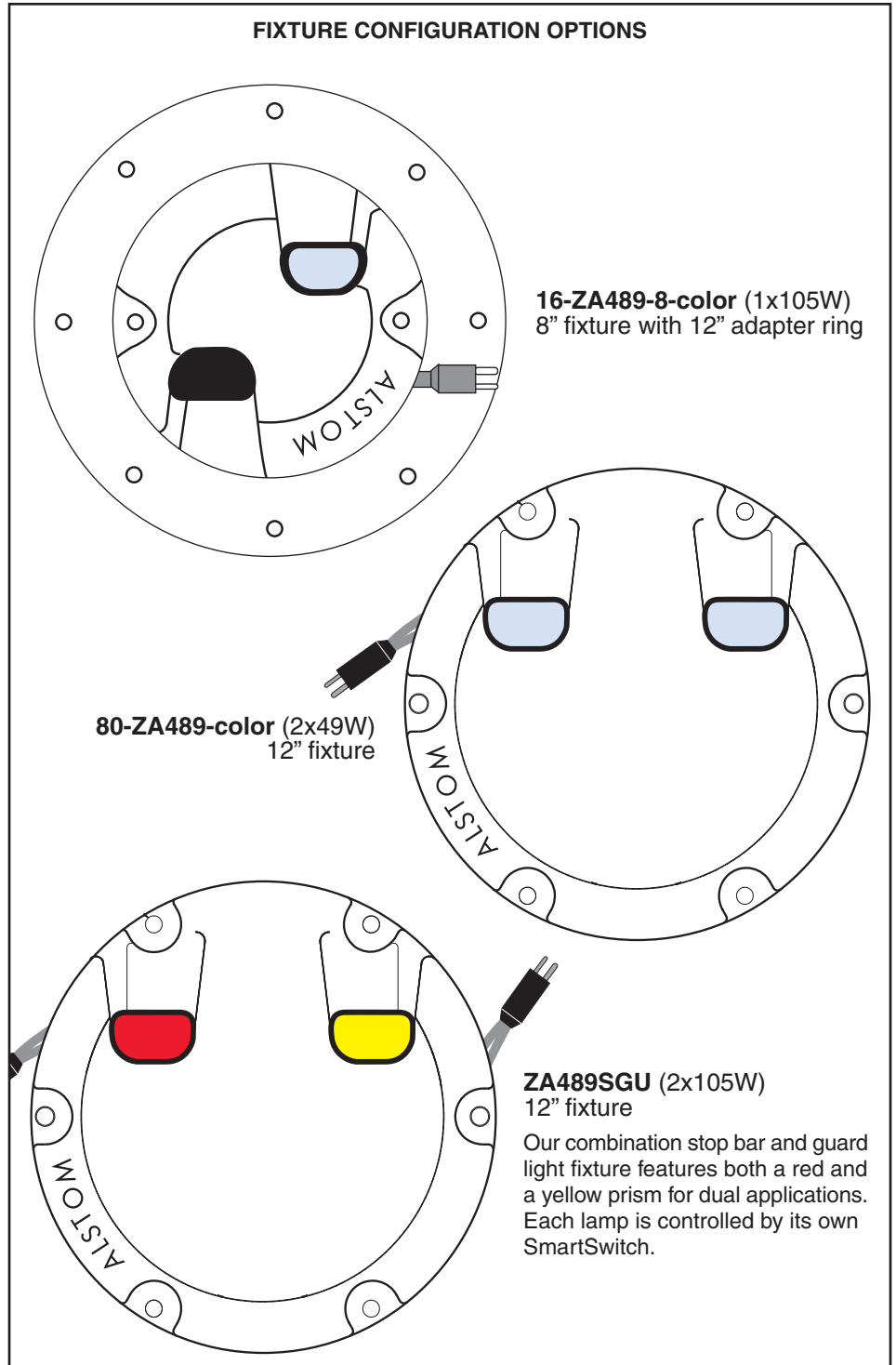
16-ZA489-8Y
80-ZA489-Y

L852S:

16-ZA489-8R
80-ZA489-R

L852G&S Combined:

80-ZA489-SGU



Visit our web site: www.flightlight.com