



Flight Light Inc.
2708 47th Ave.
Sacramento, California, U.S.A.
95822-3806



PH (916) 394-2800 FX (916) 394-2809
TF (800) 806-3548 EM info@flightlight.com

L-856
High Intensity
White Strobe

Compliance and Applications

FAA Type: L-856
High Intensity Lighting
ETL Certified:
FAA Advisory Circular 150/5345-43F
Compliant to:
ICAO Annex 14 Type A (white), Transport Canada
K310B, DGAC

Our L-856 high intensity white xenon strobe system provides a white flashing light for day, twilight and night for structures over 500' AGL. For FAA tower types B3 to B6 and C3 to C6.

Models

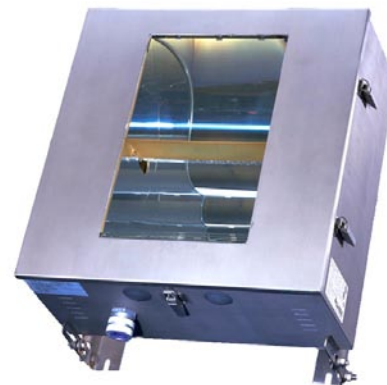
- **FTB 204:** Split enclosure with up to 30' separation between power converter and flashhead.
 - Locates 90% of electronics in an ozone free environment resulting in extended component life.
 - Power converters can be mounted at a lower level, requiring less climbing for maintenance.
- **FTB 205:** Single enclosure for power converter and flashhead for weight and wind load considerations.

Why Our L-856 Beacon is Better

- ETL certified for FAA applications.
- Certified unidirectional 120° horizontal beam.
- Available in multiple input voltages.
- Complete system includes EagleSmart FTC 121 Controller: On site or remote diagnostics, programming and monitoring. Digital display with drop down menus.
- Optional FTC 140 Controller available: LED display with clear green/red indicators for simple alarm identifications.
- NEMA 4X stainless steel outdoor rated enclosure.
- 24/7/365 monitoring and call center services.
- Component level technical support 7am-7pm CST M-F.
- Remote diagnostics with POTs connection to FTC 121.
- (2) year warranty on all parts including tubes.
- Listed on the FAA Buy American Act registry.



FTB 204: Split Enclosure



FTB 205: Single Enclosure

Visit our web site: www.flightlight.com



Flight Light Inc.
2708 47th Ave.
Sacramento, California, U.S.A.
95822-3806



PH (916) 394-2800 FX (916) 394-2809
TF (800) 806-3548 EM info@flightlight.com

L-856
High Intensity
White Strobe

FTC 121 Controller

The FTC 121 EagleSmart Controller monitors, diagnoses, logs and communicates lighting system events from the convenience of your computer that is connected via POTS line and utilizing Eagle software or on-site via an LCD digital display panel.

Remote Diagnostics and Monitoring

Diagnose or monitor the lighting system anywhere and anytime with Eagle software and a computer connected to a POTS line. Call technical support prior to the site visit to assist with the diagnostic and parts recommendation.

On-Site LCD Digital Display

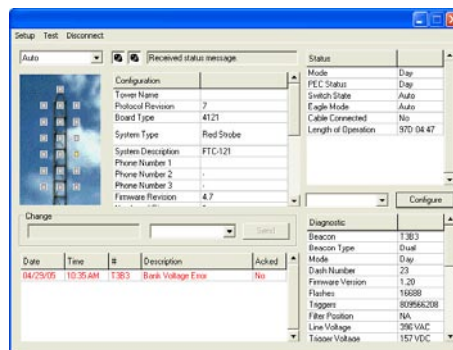
The FTC 121 Controller includes a convenient LCD digital panel providing programming, status, and diagnostics. The graphic display shows real time status of each individual strobe in the system. The digital display allows the user to interrogate an individual light to view flash counts (overall and mode specific), internal temperature, line voltages, trigger voltage, bank voltage, mode energy, marker voltage, operating marker bulbs, and current firmware version.

Features/Benefits

- Standard with high intensity strobe systems.
- Remote connectivity via POTS line.
- GPS sync available for multiple structures.
- Individual light monitoring.
- Remote mode control and override.
- Synchronizes beacons and directs flash timing and intensity.



FTC 121 Controller



- Integrates with external red light controller.
- LCD digital display.
- User programmable via scroll menus or software.
- MATS™ - Mode Alert and Transition System.
- (15) Dry contact data point outputs.
- (1) Dry contact data point input.
- Option for normally open or normally closed data points.
- Utilizes resistive photocell.
- Rack mount available.
- NEMA 4X stainless steel outdoor rated enclosure.
- Records and reports beacon alarms.
- Automated or manual intensity control.

FTC 140 Controller

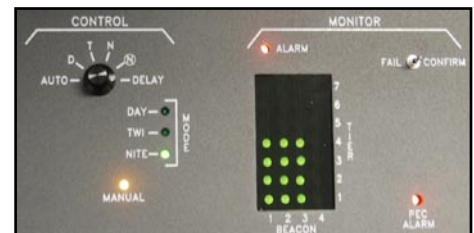
The FTC 140 monitors, diagnoses, logs and communicates lighting system events via an on-site LCD digital display panel.

Features/Benefits

- LED indicators for on site at-a-glance status.
- Independent LED status light for each beacon.
- Synchronizes beacons and directs flash timing and intensity.
- MATS™ - Mode Alert and Transition System.
- Reports beacon alarms.
- Enables automated or manual intensity control.
- (1) Dry contact data point output.
- Option for normally open or normally closed data point.
- Rack mount available.
- Utilizes resistive photocell.
- NEMA 4X stainless steel outdoor rated enclosure.



FTC 140 Controller



Visit our web site: www.flightlight.com